



## LOWCOUNTRY CONFERENCE CENTER

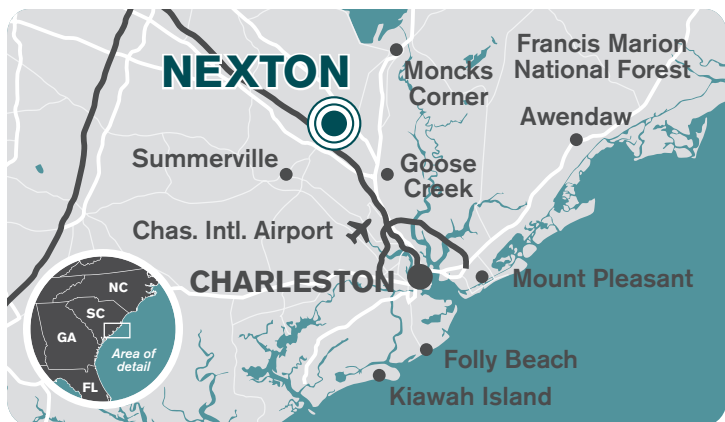
**Hilton**  
Garden Inn™  
Summerville

**HOMEWOOD**  
SUITES  
BY HILTON™  
SUMMERVILLE

# Introducing the Lowcountry Conference Center



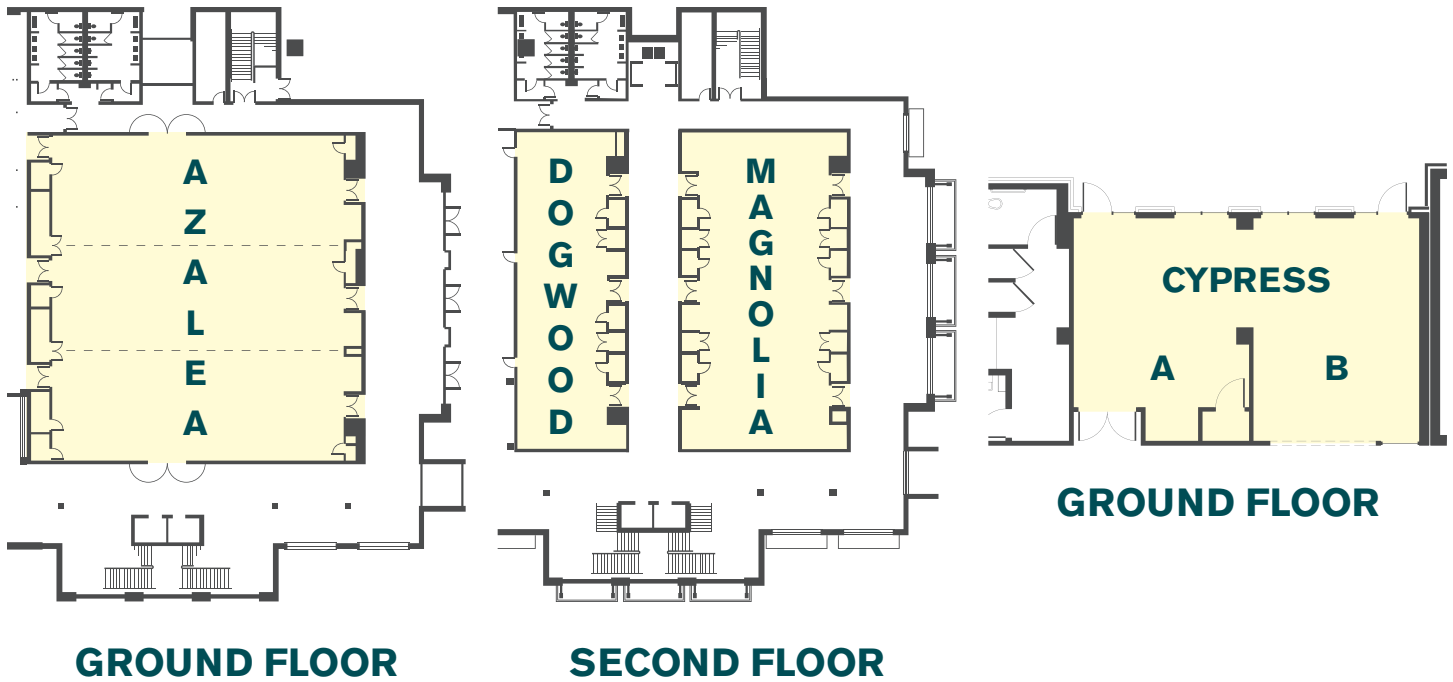
### LOCATION



### HOTEL AMENITIES

- 255 rooms
- Complimentary Wifi
- Outdoor resort style pool
- Complimentary parking
- Full-service restaurant and lounge
- Located in Nexton, Summerville's premier business-ready and people-friendly community. Nexton mixes together offices, homes, shops, schools, parks and restaurants—all tied together with a network of trails and pathways
- Access to some of Charleston's best local restaurants, such as Hall's Chophouse, Taco Boy, Poogan's Southern Kitchen, Vicious Biscuit, and more
- Serving corporate offices and business parks as well as leisure groups and travelers
- 14,000 square feet of flexible meeting space

For more information, visit our website at [LowcountryConferenceCenter.com](http://LowcountryConferenceCenter.com)  
406 Sigma Drive, Summerville, SC 29486 / 843-832-1304



## AZALEA

## GROUND FLOOR

			Theatre	Classroom*	Banquet	Reception	Hollow Square*	U-Shaped*
Azalea Ballroom	76' W x 93' L	7086 SF	800	300	450	600		
Azalea A	76' W x 31' L	2356 SF	275	100	150	275	50	40
Azalea B	76' W x 31' L	2356 SF	250	100	150	230	50	40
Azalea C	76' W x 31' L	2356 SF	275	100	150	275	50	40

\*based on 2ppl per 6ft. table

## MAGNOLIA

## 2ND FLOOR (Right Side)

			Theatre	Classroom*	Banquet	Reception	Hollow Square*	U-Shaped*
Magnolia Ballroom	34' W x 93' L	3162 SF	260	150	200	300	66	60
Magnolia A	34' W x 31' L	1155 SF	90	40	50	75	28	22
Magnolia B	34' W x 31' L	1098 SF	90	40	50	75	28	22
Magnolia C	34' W x 31' L	1155 SF	90	40	50	75	28	22

\*based on 2ppl per 6ft. table

## DOGWOOD

## 2ND FLOOR (Left Side)

			Theatre	Classroom*	Banquet	Reception	Hollow Square*	U-Shaped*
Dogwood Ballroom	23' W x 93' L	2139 SF	150	80	120	150	60	40
Dogwood A	23' W x 31' L	755 SF	50	20	30	50	20	14
Dogwood B	23' W x 31' L	728 SF	50	20	30	50	20	14
Dogwood C	23' W x 31' L	755 SF	50	20	30	50	20	14

\*based on 2ppl per 6ft. table

## CYPRESS

## GROUND FLOOR

Cypress A	37' W x 20' L	375 SF	12 people boardroom style
Cypress B	37' W x 20' L	375 SF	16 people flexible soft seating
Cypress Multipurpose Room		750 SF	